

Me2 SERIES

Stakebed & Van Body

MAXON®

Me2 C2 standard features

- Dual hydraulic lifting cylinders
- Maintenance-free components
- Protected / recessed main control with time-out feature
- Steel or aluminum platforms
- Fully-enclosed hydraulic system

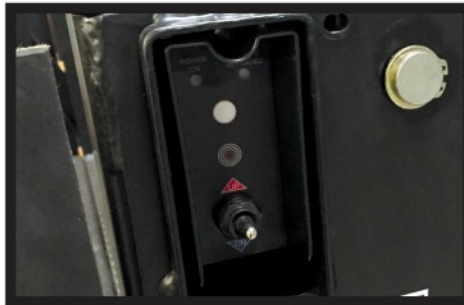
Optional features

- Light Kits
- Remote Pendant Control
- Rubber Platform Protection Bumpers



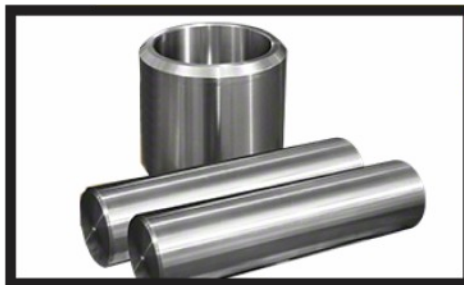
Enclosed Pump & Motor Assembly

The Me2 pump and motor assembly is fully enclosed and shielded from the elements.



Main Control with Time-Out Feature

A timed toggle control prevents unauthorized use. It automatically deactivates 90 seconds after operation.



Maintenance Free Pins & Bushings

Maintenance free pins and bushings allow for years of maintenance free service.



Power Cable with Full Length Ground

The dedicated ground cable helps to get the maximum lifespan out of the vehicles battery.

Distributed by:



12860 Muscatine St
Arleta, Ca. 91331
(818) 771-0926



42166 7th St West
Lancaster, Ca 93534
(61) 951-2222